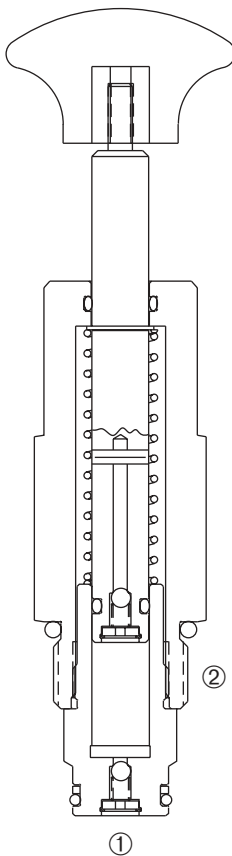
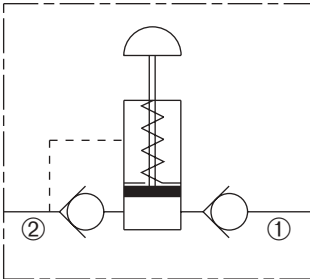


DHP2-100

Hand Pump

SERIES 10

USASI / ISO



DESCRIPTION

A self-contained cartridge style hand pump designed to deliver flow when the operator is pushed. The suction and outlet checks are integral to the cartridge.

OPERATION

When the operator is pushed, the DHP2-100 delivers nominal flow of .083 cu. in. to the ① port. When the operator is pulled, DHP2-100 suctions fluid from the ② port.

FEATURES and BENEFITS

- Checks are integral to the cartridge.
- Hardened parts for long life.
- Industry common cavity.

SPECIFICATIONS

Maximum Pressure: 3000 PSI (207 Bar)

Operating Pressure: 2000 PSI (138 Bar)

Flow: .083 cu. in.

Internal Leakage: 2 drops/min. max. at 2000 PSI (138 Bar)

Temperature: -30°F to +250°F (-35°C to +120°C)

Recommended Filtration: ISO 16/12

Fluids: Mineral-based fluids. For other fluid compatibility, consult factory.

Cavity/Cavity Tool: 100-2, see page 11.10.2

Body Material: Anodized 6061T6 aluminum alloy rated at 3000 PSI (207 Bar).

SOLENOID

CHECK

MOTION CONTROL

FLOW CONTROL

RELIEF

PRESSURE CONTROL

SEQUENCE

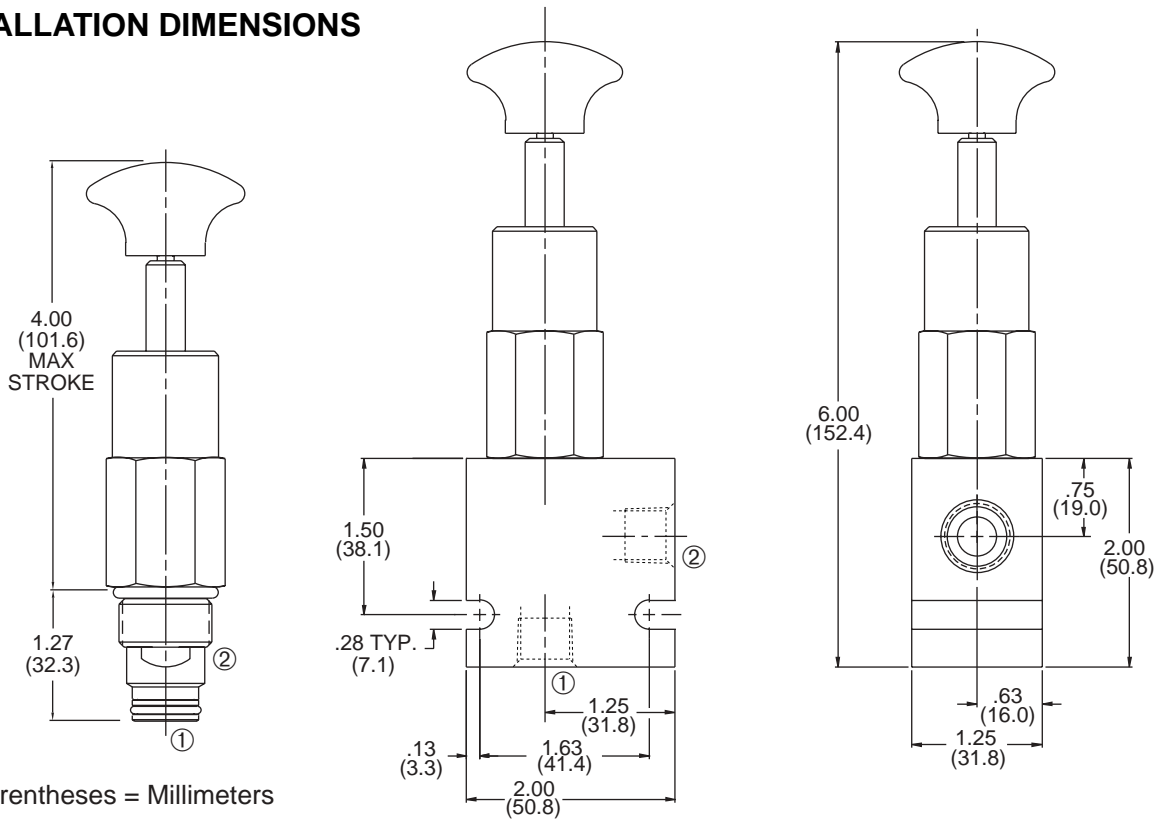
SHUTTLE

DIRECTIONAL VALVES

ACCESSORIES

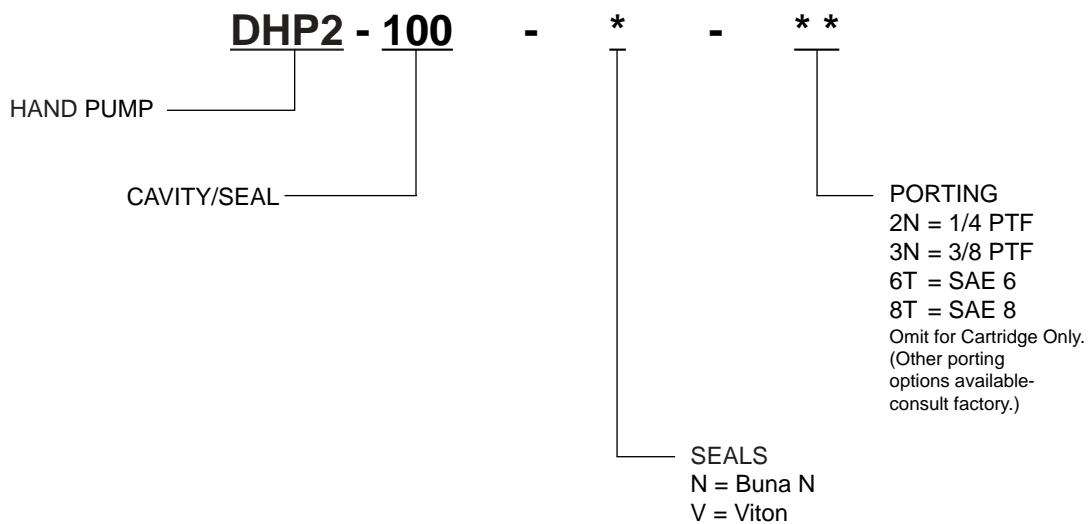
TECHNICAL DATA

INSTALLATION DIMENSIONS



() Parentheses = Millimeters

HOW TO ORDER



SOLENOID

CHECK

MOTION CONTROL

FLOW CONTROL

RELIEF

PRESSURE CONTROL

SEQUENCE

SHUTTLE

DIRECTIONAL VALVES

ACCESSORIES

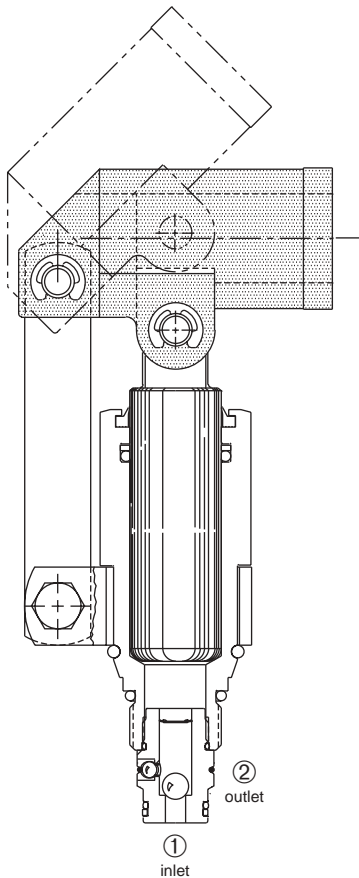
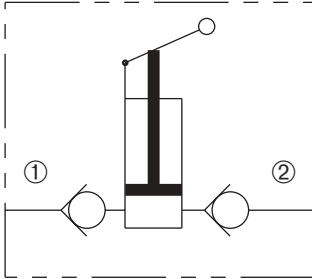
TECHNICAL DATA

DHP-100

Hand Pump

SERIES 10

USASI / ISO



DESCRIPTION

A self-contained cartridge style hand pump designed to deliver flow when the operator is pushed. The suction and outlet checks are integral to the cartridge.

OPERATION

When the operator is pushed, the DHP-100 delivers nominal flow of 0.5 cu. in. to the ② port. When the operator is pulled, DHP-100 suctions fluid from the ① port.

FEATURES and BENEFITS

- Cast Beam for heavy duty applications.
- Checks are integral to the cartridge.
- Hardened parts for long life.
- Beam rotates 360° for flexible installation and operation.
- Industry common cavity.

SPECIFICATIONS

Maximum Pressure: 3000 PSI (207 Bar)

Operating Pressure: 2000 PSI (138 Bar)

Flow: 0.5 cu. in. @ 45° rotation.

Hand Effort: 80 lbs. @ 1500 PSI (103 Bar) - 6 in. (406.4) long handle.

Internal Leakage: 2 drops/min. max. at 2000 PSI (138 Bar)

Temperature: -30°F to +250°F (-35°C to +120°C)

Recommended Filtration: ISO 16/12

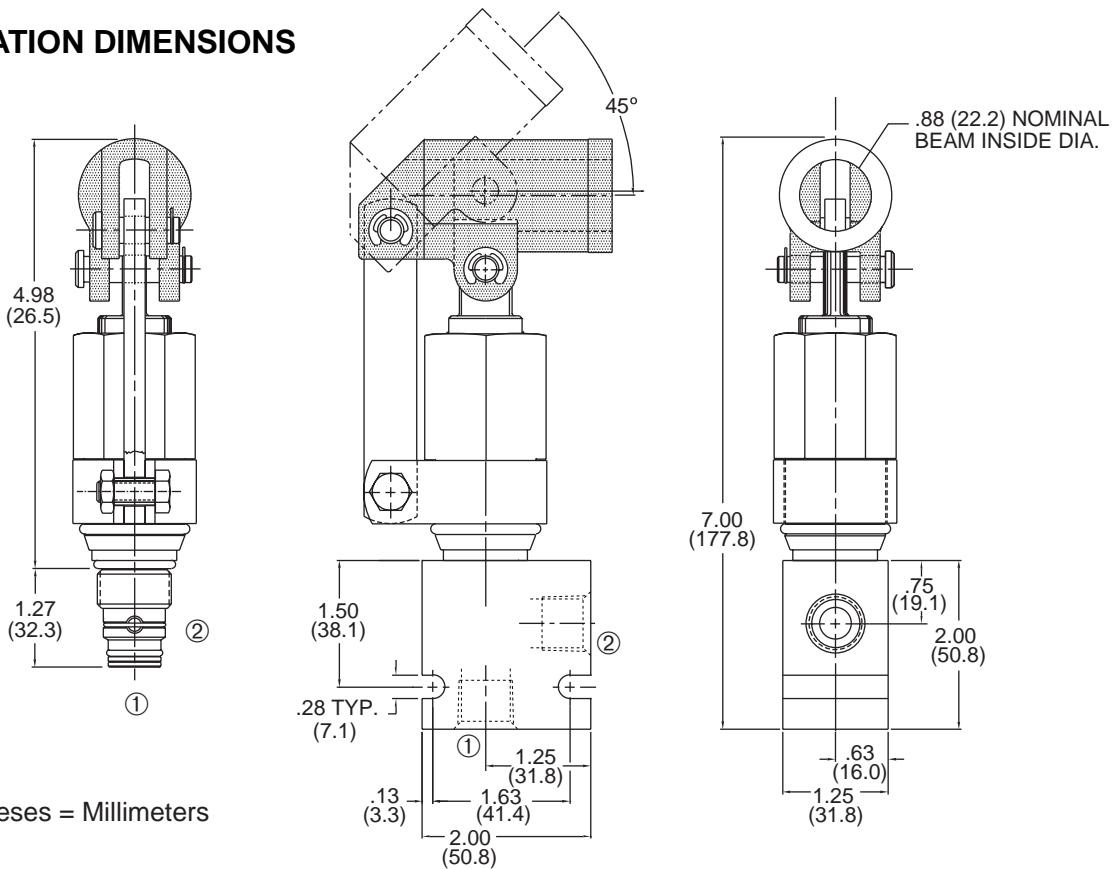
Fluids: Mineral-based fluids. For other fluid compatibility, consult factory.

Cavity/Cavity Tool: 100-2, see page 11.10.2

Body Material: Anodized 6061T6 aluminum alloy rated at 3000 PSI (207 Bar).

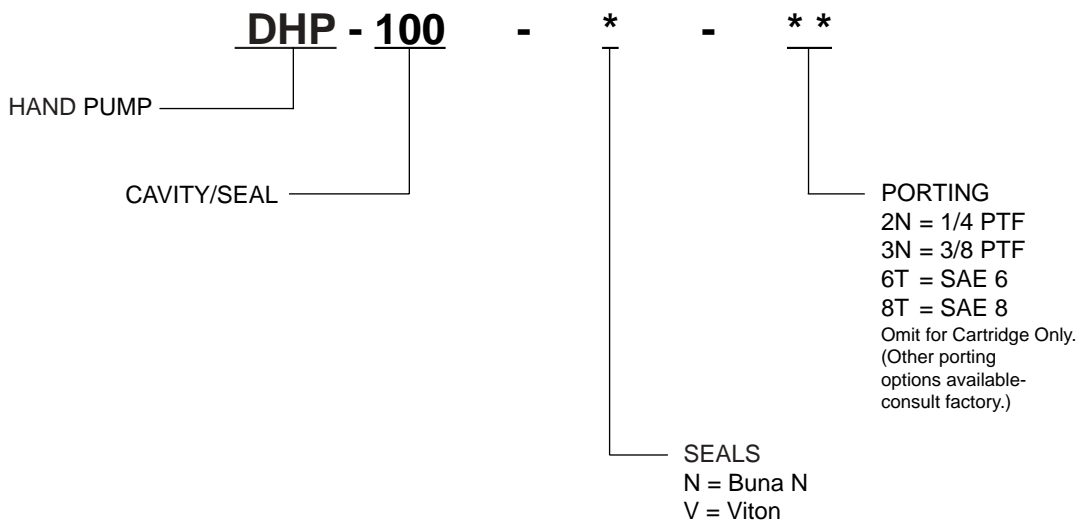
SOLENOID
CHECK
MOTION CONTROL
FLOW CONTROL
RELIEF
PRESSURE CONTROL
SEQUENCE
SHUTTLE
DIRECTIONAL VALVES
ACCESSORIES
TECHNICAL DATA

INSTALLATION DIMENSIONS



() Parentheses = Millimeters

HOW TO ORDER



SOLENOID
 CHECK
 MOTION CONTROL
 FLOW CONTROL
 RELIEF
 PRESSURE CONTROL
 SEQUENCE
 SHUTTLE
 DIRECTIONAL VALVES
 ACCESSORIES
 TECHNICAL DATA