

Variable displacement axial piston pump type V60N



Nomenclature Variable displacement axial piston pump

Operation pressure 350 (400) bar

Geom. displacement 60 ... 110 cm³/rev

Delivery flow
at 1450 rpm 87 ... 160 lpm
at 1800 rpm 108 ... 198 lpm

Pump controller
Power controller
Load-Sensing controller
Pressure controller

The variable displacement axial piston pump type V60N is intended for open circuit operation in mobile hydraulics. It works according to the swash plate principle where the delivery flow can be varied easily and fast by the angle of the swash plate. The design of this pump type provides a good performance/weight ratio and is therefore ideally suited for direct mounting at the ancillary drive of trucks. The wide

range of state-of-the-art pump controllers completes this pump to a real compact pressure supply. Together with the proportional directional spool valve typ PSV, over-center valves, sensors and electronic control from the modular design system of HAWE Hydraulik you will get a matched hydraulic system for many mobile machines.

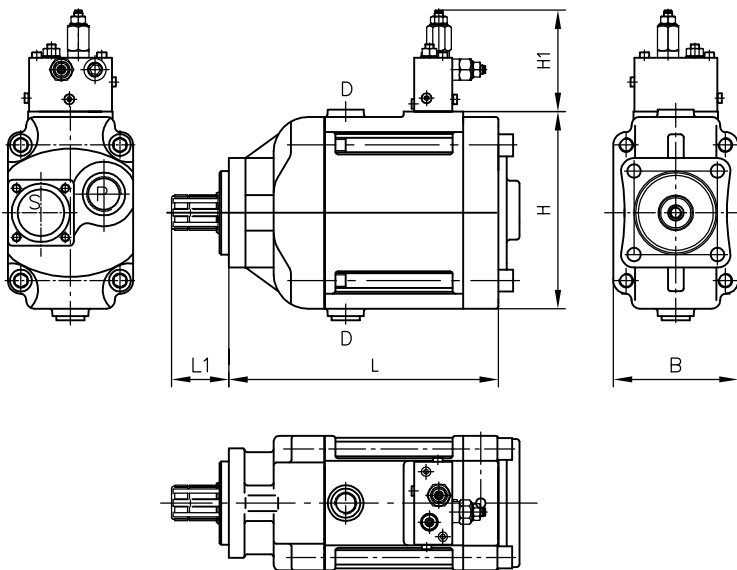
Features and benefits

- Low weight/power ratio
- Low noise level
- Sturdy design with long service life
- Maximum operation pressure 400 bar
- Maximum geometric displacement 60 to 110 cm³/rev in 3 sizes
- Suited for direct mounting at the ancillary drive of trucks or via a SAE-C flange
- Quick but responsive flow- / pressure adaptation
- Thru-shaft enables tandem-pump combinations or direct mounting of an auxiliary pump of various design
- Operation with ecologically compatible pressure fluids (synthetical ester) possible
- Wide pump controller range
- Tailored valve and accessory range

Technical data

Basic type	V60N -060	V60N -090	V60N -110
Geom. displacement (cm³/rev)	60	90	110
Nom. delivery at 1450 rpm (lpm) at 1800 rpm (lpm)	87 108	130 162	160 198
Nom. pressure p_{nom} (bar)	350	350	350
Pressure p_{max} (bar)	400	400	400
Max. revolution rating self-priming rpm	2500	2300	2200
Mass incl. pump controller (kg)	22	25.8	28

Basic dimensions All dimensions in mm, subject to change without notice !



Basic type	L	L1	B	H	H1
V60N -060	254	55	115	181	91
-090	277	55	120	189	91
-110	279	55	125	191	91

Ports (BSPP):

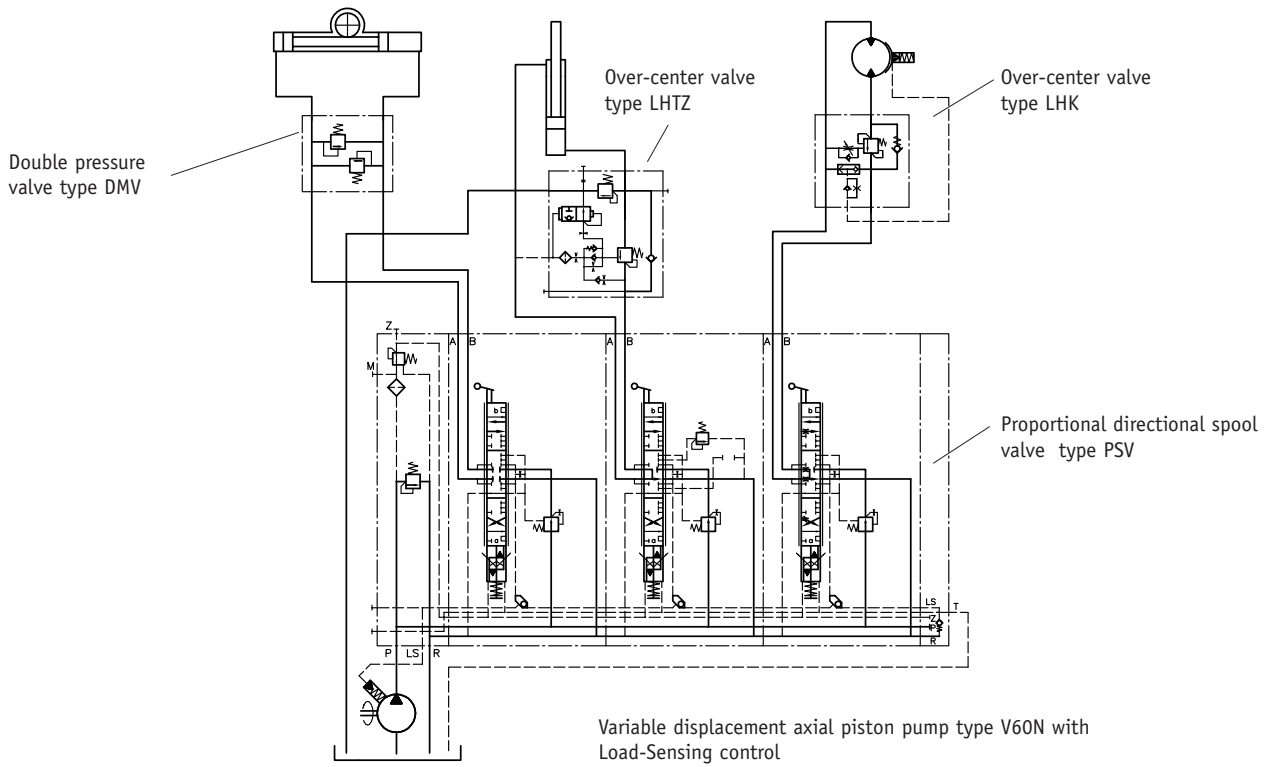
- P = Pressure outlet G 1
- S = Flange suction port
- D = Case drain G 3/4
- L = Load-Sensing-port G 1/4

Coding UNF, ports conforming SAE J 514:

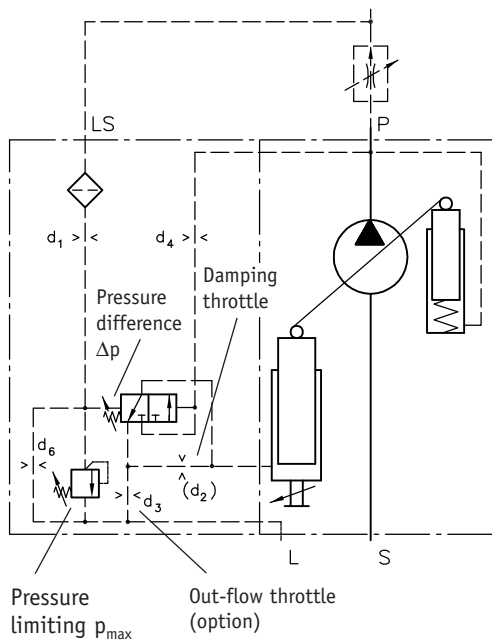
- P = 1 5/16-12 UN-2B
- S = 1 7/8-12 UN-2B
- LS = G 1/4 (ISO 228/1 (BSPP))

Example circuit

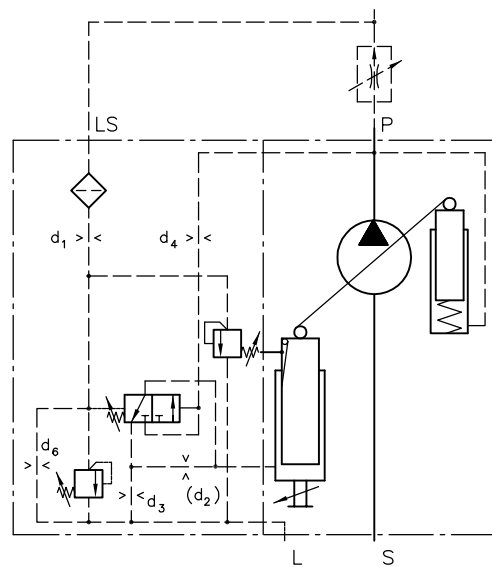
Mobile crane



Load-Sensing controller (LSN)



Power controller (LLSN)



Additional information related to this topic

- Product overview K 177
- Variable displacement axial piston pump type V60N D 7960 N
- Variable displacement axial piston pump type V30D D 7960
- Variable displacement axial piston pump type V30E D 7960 E
- Fixed displacement axial piston pump type K60N D 7960 K
- Axial piston motors type M60N D 7960 M
- Proportional directional spool valve banks,
type PSL and PSV size 2 D 7700-2
type PSL, PSV and PSM size 3 D 7700-3
type PSL and PSV size 5 D 7700-5
- Proportional directional spool valve banks, via sub-plates
type PSLF and PSVF size 3 and 5 D 7700 F
- Solenoid actuated directional spool valve type SWL D 7981
- Over-center valves type LHK D 7100
- Over-center valves type LHDV D 7770
- Over-center valves type LHT D 7918
- Electronic pressure sensor type DT D 5440 T/1, D 5440 T/2
- Programmable logical valve control type PLVC D 7845 ff
- Prop. amplifiers type EV1D D 7731 D
EV22K D 7817/1
EV1G D 7835



HAWE Hydraulik SE
Streitfeldstraße 25
D-81673 München
Tel. ++49 89 37 91 00-0
Fax ++49 89 37 91 00-12 69
info@hawe.de
http://www.hawe.de

Solutions for a World under Pressure

HAWE
HYDRAULIK