

Hand pumps type H, HE, HD, and DH

The hand pumps type H are available in single acting and double acting versions. The single acting design pumps in one lever direction only, the reverse motion performs the suction stroke.

The double acting design pumps and intakes simultaneously in both lever directions. In one particular design, the suction side may be charged with up to 150 bar.

The lever mechanism may be protected from harsh environments if desired, and may incorporate a drain valve (connecting P → S), a pressure limiting valve or a tank. These additional options enable the use of this pump in a wide array of application.

Nomenclature: Piston pump

Design: Single acting hand pump
Double acting hand pump

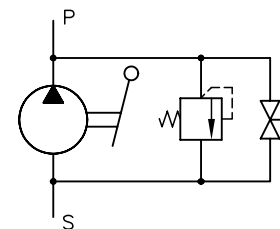
P_{max}: 80 ... 600 bar

V_{max}: 4 ... 64 cm³/stroke



Basic types and general parameters

Basic type and size	Pressure p _{max} (bar)	Geom. volume per stroke V _{H max} cm ³ /stroke	Tapped ports ¹⁾		Symbol
			P	S	
H 16	350	6			Design with pressure limiting valve and drain valve
H 20	220	9.4	G 1/4	G 1/4	
H 25	150	14.7			Design with pressure limiting valve and drain valve
HE 4	600	4			
HD 13	350	13	G 1/4	G 1/4	Design with pressure limiting valve and drain valve
HD 20	220	20			
HD 30	150	30			Design with pressure limiting valve and drain valve
DH 40	150	51	G 3/8	G 3/8	
DH 45	100	64			



¹⁾ BSPP-ports

Additional versions

- Hand pumps with pressure limiting valve and/or drain valve
- Hand pumps with tank (V_{max} = 0.5 l)
- Manifold mounting version

Order examples

H 25

Hand pump type H, size 25

HE 4

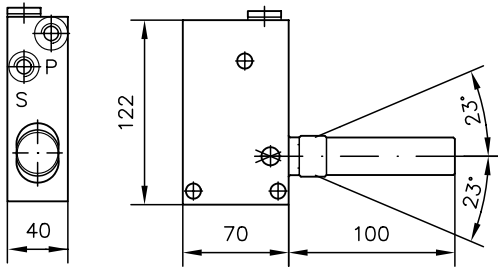
Hand pump type HE, size 4

DH 40

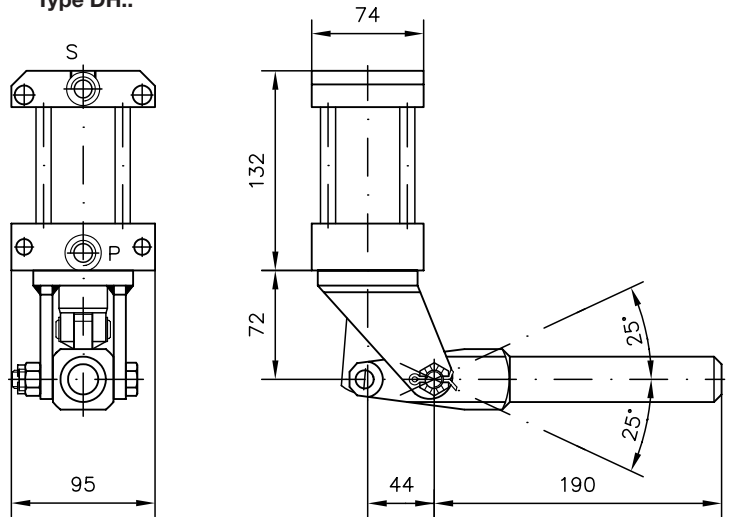
Hand pump type DH, size 40

Dimensions

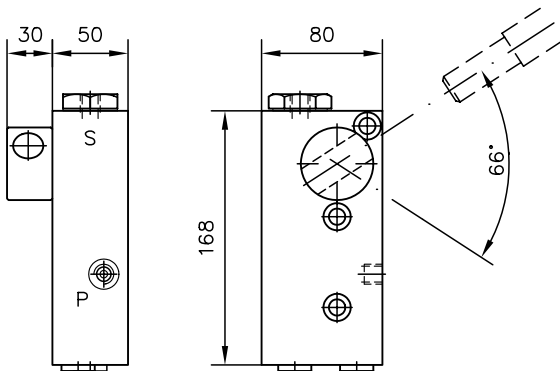
Type H..



Type DH..



Type HE.. and HD..



Basic type	P ²⁾	S ²⁾	m (kg)
H..	G 1/4	G 1/4	3.1
HE.. and HD..	G 1/4	G 1/4 and G 3/8	4.8
DH..	G 3/8	G 3/8	6.2 ... 6.6

All dimensions in mm, subject to change without notice!

²⁾ BSPP-ports

Additional information

- Hand pumps type H

D 7147/1

- see also section "Devices for special applications"
(Devices for up to 700 bar)