

Turn-key solutions from our modular system

Complete hydraulic control systems can be created at minimal cost by combining our hydraulic power packs, connection blocks and valve banks.

These valve banks may be also fed via pipes, when connection blocks type C 15 / C 16 are used as start block of the valve bank, when mounted on the pump side of the standard connection blocks. A detailed description of the HAWE products, including their performance parameters, may be found at the appropriate pages in this catalogue (see "Further Information") or the corresponding pamphlets additionally listed.

The devices may be also identified via the type index / pamphlet index in the appendix.

Nomenclature: Compact hydraulic power pack with directly mounted valve bank

Design: Complete hydraulic control system

P_{max}: 700 bar



Order examples

FP 12 - H 0,56 -	C 5	
HC 34/0,9 -	B31/450 - EM11 V - 13 - G 24	
MP 24 - H 1,39 - Z 12,3/B 25 -	NE 21 - 320/25 -	VB 21 GM - RH - 3 - G 24
HK 448 ST/1 - H 5,0 -	AS 1 F 2/300 -	BVZP 1 F 23 - G 52/22 - H 14 N 15/0 - 1 - 1 - G 24
C 16 -	AP 34 - 43/24 -	BWN 1 F - HJ 5 - 1 - 1 - G 24

Compact hydraulic power packs

Connection blocks

Directly mounted valve banks

Further information

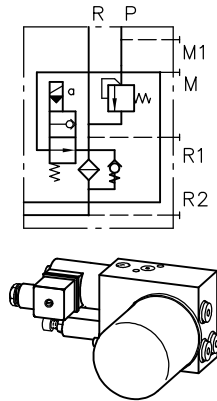
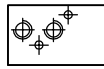
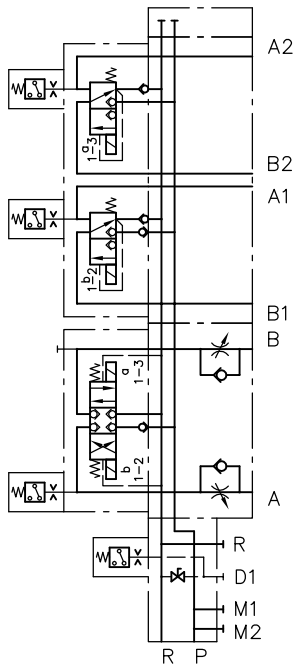
• Compact hydraulic power pack type FP	D 7310	• Connection block type A..	D 6905 A/1
type HC, HCW, HCG	D 7900, D 7900 G	type AX	D 6905 TÜV
type MP, MPN, MPW, MPNW	D 7200, D 7200 H,	type B..	D 6905 B
	D 7207	type C..	D 6905 C
type HK, HKF, HKL	D 7600 ++	• Dual stage valves type NE	D 7161
type KA, KAW	D 8010, D 8010 M	• Dual stage connection block type NA	D 6905 A/1
• Hydraulic power pack with radial piston pump	D 6010, D 6010 H	• Directional spool valves type SWC, SKC	D 7450, D 7230
type R, RG		• Switch unit type CR	D 7150
• Hydraulic power pack with gear pump type Z	D 6820	• Valve banks type VB	D 7302
• Hydraulic power pack with dual stage pump	D 6910, D 6910 H	type BWH(N)	D 7470 B/1
type RZ		type BVZP	D 7785 B
• Hydraulic power pack with pneumatically operated pump type LP	D 7280, D 7280 H	type SWR, SWS	D 7450, D 7451, D 7951
		type BA	D 7788
		type BVH	D 7788 BV

For section and page of the additionally listed devices, see type index

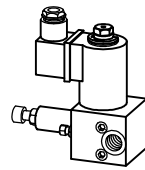
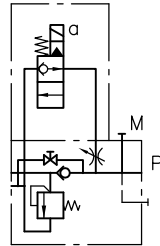
• see also section "Devices for special applications" (Hydraulics for clamping, Press controls, Devices for up to 700 bar)

Possible combinations

Connection hole pattern for pipe connection or direct mounting of a directional valve bank
e.g. BVZP1F23-G52/22-H14N15/0-1-1G24



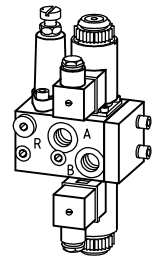
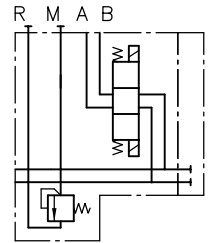
Type A
e.g. AS1F2/300-G24



Type B
e.g. B31/450-EM11V-13-G24

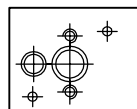


Type C
e.g. C5



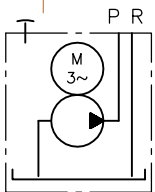
Type SKC, SWC
e.g. SWC1/150-L-1-G24

Connection block

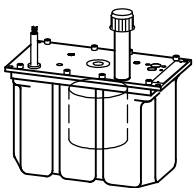


Common connection hole pattern

Compact hydraulic power packs

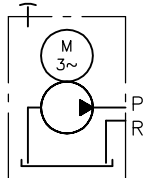


e.g. FP12-H 0,56

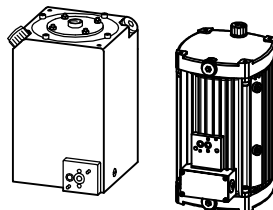


Type FP

for miniature hydraulic systems with 5 ...10% ED
($P_{max} = 700$ bar,
 $Q_{max} = 2.1$ lpm)

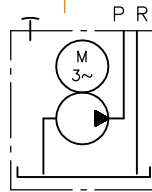


e.g. HC34/0,9
KA 24 SKS/0,36

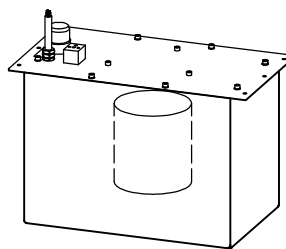


Type HC, HCW, KA, KAW

for miniature hydraulic systems with 10...30% ED
($P_{max} = 700$ bar, $Q_{max} = 20.1$ lpm), available in 4 sizes, also as dual circuit pump

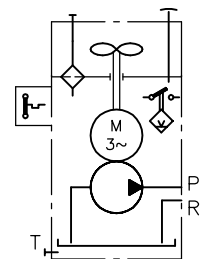


e.g. MP(N)24-H1,77/B10

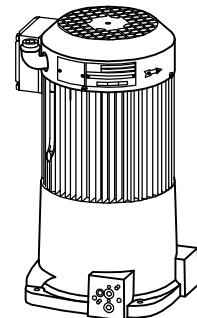


Type MP, MPN, MPW, MPNW

suitable for intermittent or load/no load operation ($P_{max} = 700$ bar, $Q_{max} = 15$ lpm) available in 5 sizes, also as dual stage pump, various tank sizes



e.g. HK448ST/1-H5,0



Type HK, HKF, HKL

suitable for continuous operation ($P_{max} = 700$ bar, $Q_{max} = 16$ lpm), available in 3 sizes, also as double and triple circuit pump