

# Flow dividers type TQ and TV

The flow dividers type TQ divide (collect) total flow entering (exiting) at port C. The distribution is independent of working pressure at ports A and B, and may be divided equally or unequally in predetermined portions.

The flow divider type TV features priority division, i.e. variable flow entering port C is divided where partial flow  $Q_A$ , through port A, is kept constant and the residual flow  $Q_B$ , exits port B. As soon as one actuator's movement is stopped the flow to the other is either reduced to a minimal flow (type TQ) or completely reduced to leakage flow (type TV). It is possible to overcome this design feature by creating flow via a pressure limiting valve.

These valves are used for applications where one pump is required to supply two unevenly loaded consumers, which must be driven simultaneously and independently (type TQ) or if one actuator requires priority flow (type TV) .



**Nomenclature:** Flow dividers with or without priority division

**Design:** Individual valve for pipe mounting  
Manifold mounting

**Adjustability:** Non-adjustable

$p_{max}$ : 300 ... 350 bar

$Q_{max}$ : 7.5 ... 200 lpm (nom. total flow)

## Basic types and general parameters

| Basic type and size | Flow $Q_{max}$ (lpm) | Oper. pressure $p_{max}$ (bar) | Tapped ports (BSPP) 1) |              |       | Symbol        |                   |
|---------------------|----------------------|--------------------------------|------------------------|--------------|-------|---------------|-------------------|
|                     |                      |                                | A                      | B            | C     | Pipe mounting | Manifold mounting |
| TQ 2..              | 7.5 ... 70           | 350                            | G 1/4, G 3/8           | G 1/4, G 3/8 | G 3/8 |               |                   |
| TQ 3..              | 7.5 ... 70           | 350                            | G 3/8, G 1/2           | G 3/8, G 1/2 | G 1/2 |               |                   |
| TQ 3P               | 7.5 ... 70           | 350                            | ---                    | ---          | ---   |               |                   |
| TQ 4..              | 80 ... 120           | 350                            | G 1/2                  | G 1/2        | G 3/4 |               |                   |
| TQ 4P               | 80 ... 120           | 350                            | ---                    | ---          | ---   |               |                   |
| TQ 5..              | 140 ... 200          | 350                            | G 3/4                  | G 3/4        | G 1   |               |                   |
| TQ 5P               | 140 ... 200          | 350                            | ---                    | ---          | ---   |               |                   |
| TV 3..              | 60                   | 300                            | G 3/8                  | G 1/2        | G 1/2 |               |                   |
| TV 3P               | 60                   | 300                            | ---                    | ---          | ---   |               |                   |

1) For pipe mounting versions only

## Additional versions

- Flow divider type TQ without return flow feature
- Flow divider type TQ with by-pass check valves enabling return flow
- Flow divider type TQ with unequal division

## Order examples

### TQ 32 - A3

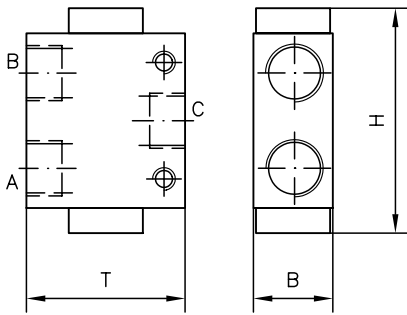
Flow divider type TQ, size 3, tapped port size 2 (C = G 1/2; A,B = G 3/8), version A (dividing or collecting), with a nominal total flow  $Q_{CN} = 45$  lpm (coding 3)

### TV 3 - 2,5

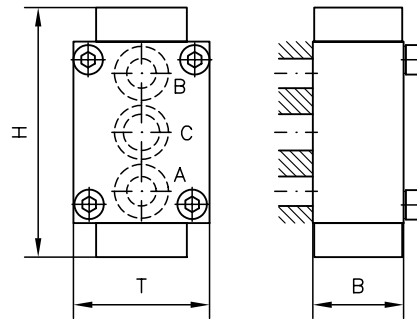
Flow divider with priority division type TV, size 3, flow coding 2.5 ( $Q_A = 5.8$  lpm)

**Dimensions**

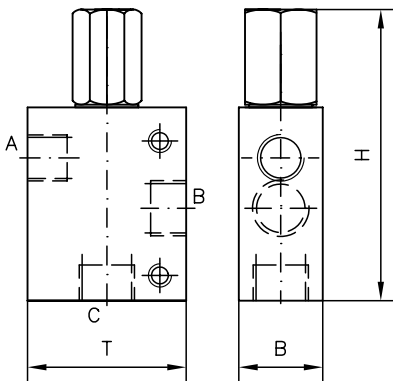
**Type TQ ...**



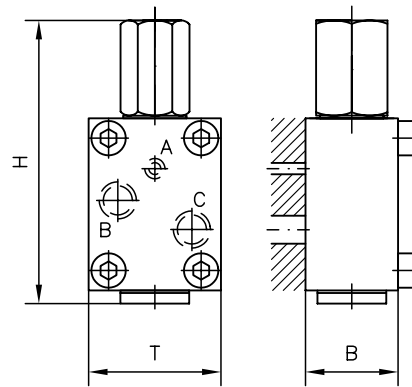
**Type TQ .P**



**Type TV 3..**



**Type TV 3P**



All dimensions are in mm, and subject to change without notice!

| Basic type | H   | B  | T  | m (kg)      |
|------------|-----|----|----|-------------|
| TQ 2..     | 79  | 30 | 50 | 0.6         |
| TQ 3..     | 85  | 30 | 60 | 0.6 ... 0.7 |
| TQ 3P      | 79  | 30 | 50 | 0.7         |
| TQ 4..     | 110 | 40 | 60 | 1.5         |
| TQ 4P      | 110 | 40 | 60 | 1.6         |
| TQ 5..     | 134 | 50 | 80 | 3           |
| TQ 5P      | 134 | 50 | 80 | 3.1         |
| TV 3..     | 109 | 30 | 60 | 1.0         |
| TV 3P      | 106 | 35 | 50 | 1.0         |

**Further information**

- Flow divider (flow distributor) type TQ D 7381
- Flow divider type TV D 7394

For page and section of the devices additionally listed, see type index