

# Circulation valve type CNE

The pressure controlled 2-way directional valve automatically switches one (low pressure) of two circuits feeding a hydraulic system into idle circulation as soon as the adjusted pressure is achieved or exceeded by the high pressure circuit.

The valve is retained in this shifting position, enabling idle circulation, via the higher pressure being picked up and transmitted by a control oil duct. This valve also serves as a pressure limiting valve for the low pressure circuit. Contrary to version CNE 2, CNE 21 features an additional thread seal and CNE 22 and 23 a thread seal plus a piston seal. The idle circulation valves type CNE are screw-in valves where the mounting hole can be easily manufactured.

**Nomenclature:** 2-way circulation valve

**Design:** Screw-in valve

**Adjustability:** Tool adjustable

$p_{max}$ : 500 bar

$p_{max\ adjust}$ : 450 bar

$Q_{max}$ : 30 lpm



## Basic types and general parameters

Basic type and size	Flow $Q_{max}$ (lpm)	Oper. pressure $p_{max}$ (bar) with		Symbol
		P	Z	
CNE 2	30	E: 30	500	
CNE 21		D: 45		
CNE 23		C: 60		
		B: 75		
		A: 90		
	M: 120			
	L: 150			
CNE 22	30	C: 320	500	
CNE 23		B: 450		

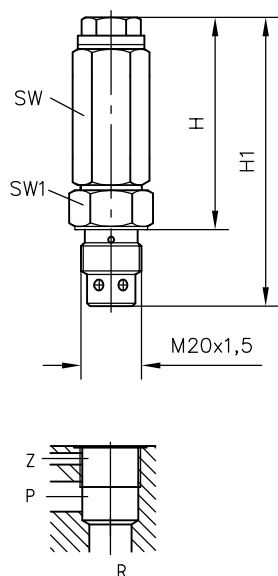
## Additional versions

- Additionally sealed tapped journal to reduce leakage losses (type CNE 21)
- Additionally sealed tapped journal and piston to minimize leakage losses (type CNE 22 and CNE 23)

## Order example

### CNE 2 C - 50

Circulation valve type CNE 2, pressure range 45...60 bar (coding C) factory set to 50 bar

**Dimensions**

SW = a/f

All dimensions in mm, subject to change without notice!

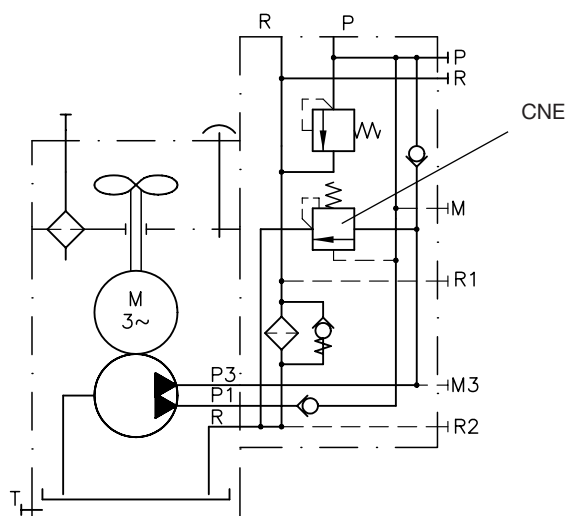
Basic type	H	H1	SW	SW1
CNE 2, 21, 23	70	96	a/f 22	a/f 24
CNE 22	120	147	a/f 30	a/f 27

**Additional information**

- Circulation valves type CNE D 7710 NE
- Two stage valves type NE D 7161
- Two stage connection block type NA D 6905 A/1
- Switch unit type CR D 7150
- Shut-off valves type ALZ D 6170
- Externally pressure controlled relieve valves type AE D 6170
- Shut-off valves type LV D 7529

**Example circuit**

HK448/1-HH...-AN21F2



Circulation valve integrated in connection block type AN 21 F2 for compact hydraulic power packs type HK with two pump circuits

- Connection blocks type AN, AL D 6905 A/1
- Compact hydraulic power packs
  - type HK, HKF, HKL D 7600-4, D 7600-3L
  - type MP, MPN, MPW D 7200, D 7200 H, D 7207
- See also section "Devices for special applications" (Screw-in valves and installation kits, Devices for up to 700 bar)

For page and section of the devices additionally listed, see type index