

Hydraulic miniature accumulators type AC

The diaphragm type hydraulic miniature accumulators type AC are available in two sizes. The smaller accumulators with a volume of 0.013 dm³ bzw. 0.040 dm³ are used to compensate temperature dependent volume variations, possible losses due to leakage, or to dampen oscillations in circuits with pressure difference controlled devices.

The bigger ones with volumes between 0.32 dm³ and 1.95 dm³ as are mainly used to assist the pump delivery flow or as source of pressurized oil for emergency actuations.

These accumulators may be integrated in differing hydraulic systems e.g. hydraulic clamping systems, in various installation positions by means of a wide range of fittings.



Nomenclature:	Accumulator
Design:	Screw-in version
p_{max}:	500 bar
V_{0 max}:	1.95 dm ³

Basic types and general parameters

Basic type and size	V ₀ (dm ³)	Pressure p _{max} (bar)	Max. gas filling pressure p ₀ (bar)	Connection thread (BSPP)	Symbol
Hydraulic miniature accumulators					
AC 13-1/4	0.013	500	250	G 1/4 A	
ACS 13-1/4 ¹⁾	0.013	500	250	G 1/4 A	
AC 40-1/4	0.040	400	250	G 1/4 A	
Accumulator					
AC 3221/3A	0.32	210	140	G 1/2	
AC 3225/3	0.32	210	140	G 1/2 A	
AC 503/18	0.5	330	200	M 18x9.5	
AC 603/3	0.6	330	200	G 1/2	
AC 1002/22	1.0	210	140	M 22x1.5	
AC 1414/22	1.4	140	120	M 22x1.5	
AC 2001/3A	1.95	100	90	G 1/2 A	
AC 2002/4	1.95	250	140	G 3/4	

¹⁾ Version with shut-off valve

Additional versions

- Prolongations to increase the distance

- Fittings (see also "Further information")

Order examples

ACS 13 - 1/4 - 50/110

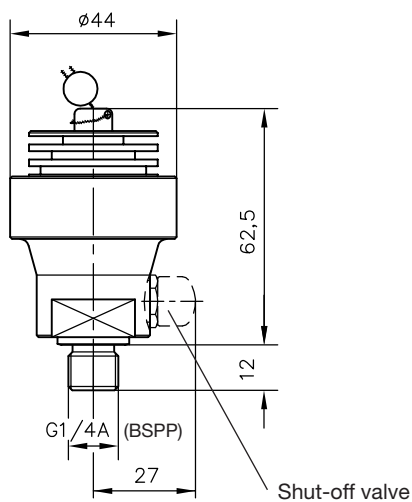
Hydraulic miniature accumulator type ACS, with shut-off valve, size 13, connection thread G 1/4 A, gas filling pressure 50 bar, set pressure for the shut-off valve 110 bar

AC 40 - 1/4 - 150

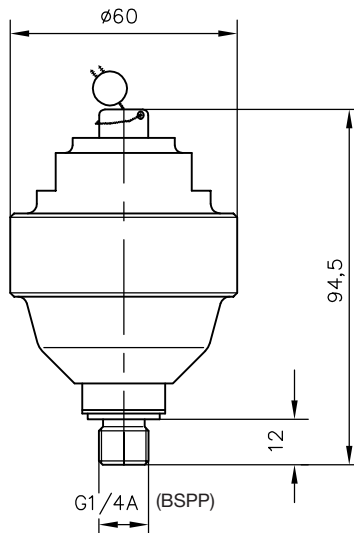
Hydraulic miniature accumulator type AC 2001, connection thread G 1/2 A, gas filling pressure 90 bar

Dimensions

Type AC(S) 13 - 1/4



Type AC 40 - 1/4

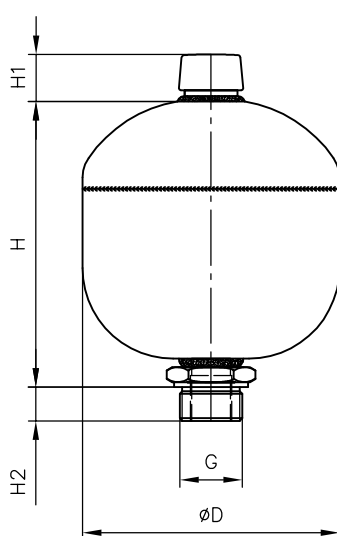
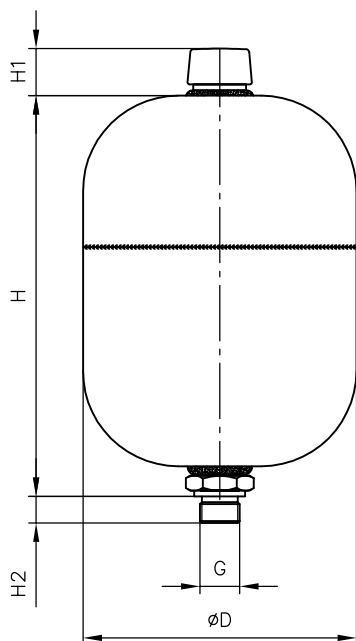


Basic type	m (kg)
AC(S) 13	0.3
AC 40	0.65

All dimensions in mm, subject to change without notice!

Type AC 3221
AC 2001

Type AC 3225
AC 503
AC 603
AC 1002
AC 1414



Basic type	H	H1	H2	øD
AC 3221	108.5	22	14	95
AC 3225	98	22	-	95
AC 503	155	20	-	116
AC 603	149	23	-	115
AC 1002	151	25	18	136
AC 1414	162	25	18	147
AC 2001	212	25	14	144.7
AC 2002	229	25	-	155

Further information

- Hydraulic miniature accumulators type AC
- Accumulator type AC
- Fittings type X84
- Pressure gauges

- D 7571
- D 7969
- D 7077
- D 7077

- See also section "Devices for special applications" (Hydraulic clamping systems)

For page and section of the devices additionally listed, see type index