

Shut-off valves type LV and ALZ

These shut-off valves automatically switch the pump delivery flow into idle circulation as soon as the adjusted pressure is achieved. There is a check valve upstream of the consumer port A preventing any return flow via the port R. The idle circulation switching position is interrupted as soon as the pressure in the consumer port drops approx. 13% under the set pressure figure. The self controlled valves type LV do not require any flow pulsation whereas type ALZ is a piloting valve.

Both types are mostly used as accumulator charge valves, and should be installed as near to the pump as possible.



Nomenclature: Shut-off valve
(idle circulation valve, direct controlled or piloted)

Design: Individual valve for pipe connection
Individual valve
Manifold mounting

Adjustability: Tool adjustable
Manually adjustable

p_{max} : 350 bar

Q_{max} : 120 lpm

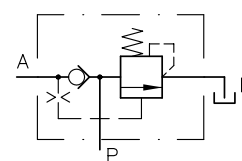
Basic types and general parameters

Basic type	LV		ALZ		
	10	20	3	4	5
Control	Direct		Piloted		
Size	10	20	3	4	5
Flow	12	25	50	80	120
Q_{max} (lpm)					
Pressure range:	F: 60	F: 80	F: 60	F: 60	F: 60
Pressure p_{max} (bar)	E: 140	E: 140	E: 140	E: 140	E: 140
	D: 240	D: 220	D: 240	D: 240	D: 240
	C: 350	C: 350	C: 350	C: 350	C: 350
Tapped ports ¹⁾ (BSPP)	G 1/4	G 3/8	G 1/2	G 3/4	G 1

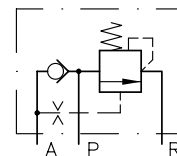
¹⁾ Version for pipe connection

Symbol

For pipe connection



Manifold mounting valve



Additional versions

- Manually adjustable pressure setting, only type ALZ
- Arbitrary idle circulation via a 2/2-way solenoid valve, only type ALZ
- Version with low switching hysteresis, type LV 25

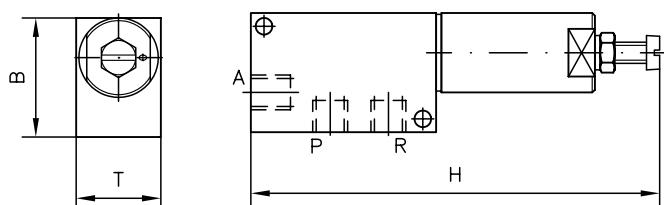
Order examples

LV 10 D - 180

Shut-off valve type LV, size 10 ,
pressure range 130...250 bar (coding D),
pressure factory set to 180 bar

Dimensions

Type LV..

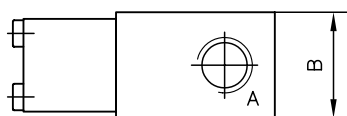


ALZ 4 PC - 250

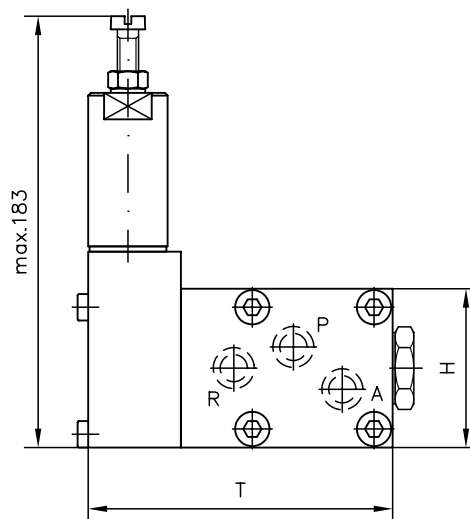
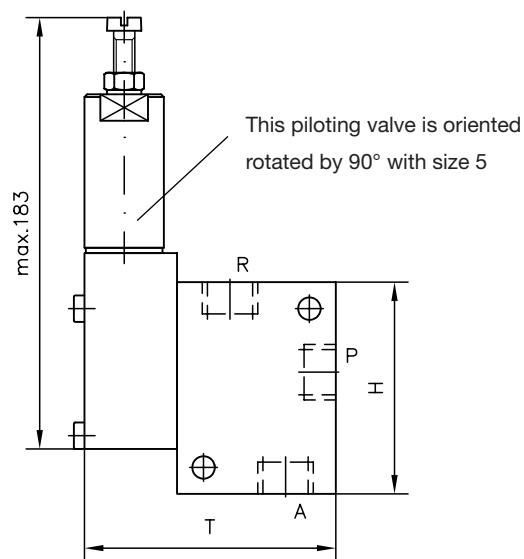
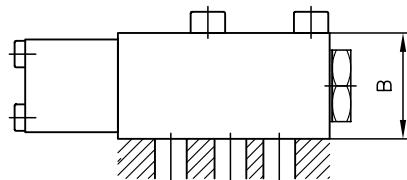
Shut-off valve type ALZ, size 4,
manifold mounting valve (coding P),
pressure range 241...350 bar, (coding C)
pressure factory set to 250 bar

Basic type	B	H _{max}	T	m (kg)
LV 10	45	155	32	0.9
LV 20	50	205	32	1.2

Type ALZ..G..



Type ALZ..P..



All dimensions in mm, subject to change without notice!

Basic type	B	H	T	m (kg)
ALZ 3 G	40	80	99	2.0
ALZ 4 G	40	94	109	2.4
ALZ 5 G	63	105	135	4.3
ALZ 4 P	40	60	119	2.1
ALZ 5 P	40	80	133	4.3

Additional information

- Shut-off valves type LV D 7529
- type ALZ D 6170
- type AL D 6170
- Release valves type AE D 6170

For page and section of the devices additionally listed,
see type index