

Check valves type CRK and CRB



The check valves type CRK and CRB are used to block the flow in one direction and allow free flow in the opposite direction.

The check valve type CRK is a spring pre-loaded ball seated valve and is intended to block the flow into the manifold, whereas type CRB is a shim type check valve, intended to block the flow in direction of the hexagon head of the valve body. Both types can be screwed in mounting holes which can be easily machined with a standard drill (point angle 118°). These mounting holes can be easily blocked by means of two different plugs.



Nomenclature:	Check valve
Design:	Screw-in valve
p_{max}:	500 bar
Q_{max}:	30 ... 80 lpm

Basic types and general parameters

Basic type and size	Flow Q_{max} (lpm)	Oper. pressure p_{max} (bar)	Mounting thread	Symbol	
				CRK	CRB
CRK 1 / CRB 1	30	500	M 16 x 1.5		
CRK 2 / CRB 2	50	500	M 20 x 1.5		
CRK 3	80	500	M 24 x 1.5		

Additional versions

- Tapped plug
- Tapped plug (blocking also internal ducts)
- Connection blocks for direct pipe connections

Order examples

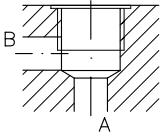
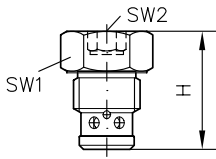
CRK 1

Check valve type CRK, size 1

CRB 2

Check valve type CRB, size 2

Dimensions



Basic type	H	SW1	SW2	Mounting thread	m (g)
CRK 1 / CRB 1	31	a/f 22	a/f 8	M 16 x 1.5	70
CRK 2 / CRB 2	35	a/f 24	a/f 10	M 20 x 1.5	110
CRK 3	38	a/f 30	a/f 12	M 24 x 1.5	125

SW = a/f

All dimensions in mm, subject to change without notice!

Further information

- Check valves type CRK, CRB
type RK, RB
type RC
type RE

D 7712
D 7445
D 6969 R
D 7555 R

- See also section "Devices for special applications"
(Screw-in valves and installation kits, Devices for up to 700 bar)

For page and section of the devices additionally listed,
see type index