

# Screw-in check valves with hydraulic release type CRH and RHC

The screw-in check valves with hydraulic release type CRH and RHC are used in hydraulic circuits together with design related, leaking directional valves, as a hydraulically actuated drain, or idle circulation valves. The valves type RHC with or without pre-release (for high pressure and high consumer flows) are designed as screw-in valves.

Both types can be screwed in mounting holes which can be easily machined with a standard drill (point angle 118°).

Many different versions are available to cover all requirements.

Type CRH valves are designed as a valve cartridge.



**Nomenclature:** Check valve with hydraulic release

**Design:** Valve insert  
Screw-in valve

**Actuation:** Hydraulic

**$p_{max}$ :** 500 ... 700 bar

**$Q_{max}$ :** 8 ... 200 lpm

## Basic types and general parameters

Basic type and size	Flow $Q_{max}$ (lpm)	Oper. pressure $p_{max}$ (bar)	Release ratio $p_A / p_Z$	Mounting thread	Symbol
CRH 1	30	500	2.6	M 16 x 1.5	
CRH 2	50	500	2.6	M 20 x 1.5	
CRH 3	80	500	2.5	M 24 x 1.5	
RHC 1	15	700	2.6	M 16 x 1.5	
RHC 2	25	700	2.6	M 20 x 1.5	
RHC 3	55	700	2.5	M 24 x 1.5	
RHC 4	100	500	2.5	M 30 x 1.5	
RHC 5	150	500	2.8	M 36 x 1.5	
RHC 6	200	500	2.5	M 42 x 1.5	

## Additional versions

- Valve types with increased release ratio (approx. 4.2 : 1)
- Valve types with additional seals for the actuation piston and mounting thread
- Valve types with hydraulically assisted actuation piston, tolerant to residual pressure in the return duct (type RHCE)
- Valve types with pre-release (type CRH.V and RHC.V)

## Order examples

### CRH 3

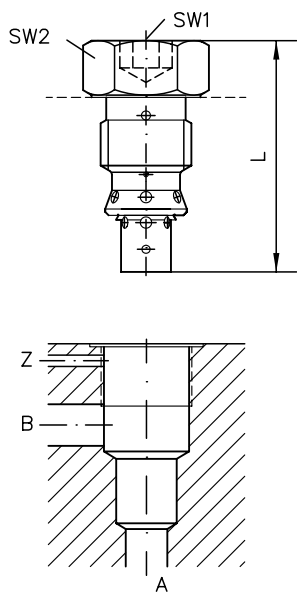
Check valve with hydraulic release type CRH, size 3

### RHC 5

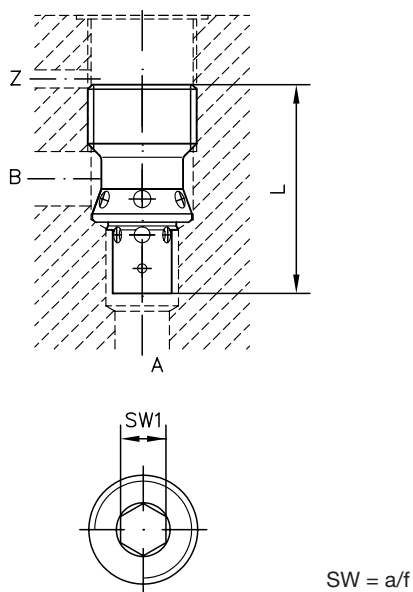
Check valve with hydraulic release type RHC, size 5

**Dimensions**

**Type CRH**



**Type RHC**



SW = a/f

All dimensions in mm, subject to change without notice!

Basic type	Mounting thread	L	SW1	SW2	m (g)
CRH 1	M 16 x 1.5	47	a/f 8	a/f 22	60
CRH 2	M 20 x 1.5	53	a/f 10	a/f 24	90
CRH 3	M 24 x 1.5	61	a/f 12	a/f 30	150
RHC 1	M 16 x 1.5	32	a/f 6		20
RHC 2	M 20 x 1.5	37.5	a/f 8		40
RHC 3	M 24 x 1.5	47	a/f 10		70
RHC 4	M 30 x 1.5	56	a/f 12		140
RHC 5	M 36 x 1.5	67.5	a/f 14		250
RHC 6	M 42 x 1.5	97	a/f 19		500

**Further information**

- Check valves with hydraulic release
 

type CRH	D 7712	
type RHC	D 7165	• See also section “Devices for special applications” (Screw-in valves and installation kits, Devices for up to 700 bar)
type RHV	D 3056	
type HRP	D 5116	For page and section of the devices additionally listed,
type RH	D 6105	see type index