

Check valves with release type RH and DRH

The check valves with hydraulic release type RH and DRH are used for blocking one or two consumer lines, as hydraulically actuated drain valves, or idle circulation valves. The valves may be optionally equipped with a pre-release, for one or both connection sides, to prevent decompression surges in the event of high pressure and high consumer flows. The type DRH has many variations and options such as in-line design, manifold mounting design, shock valves, pressure limiting valves to prevent slow pressure rises, and a leakage port to prevent unintended opening of the valve due to pressure rises, caused by leaking spool valves.



Nomenclature:	Check valve with hydraulic release
Design:	Individual valve for in-line installation Manifold mounting valve
Actuation:	Hydraulic
p_{max}:	700...400 bar
Q_{max}:	15...160 lpm

Basic types and general parameters

Basic type and size	Flow Q_{max} (lpm)	Oper. pressure p_{max} (bar)	Release ratio $p_{A(B)} / p_Z$	Tapped ports (BSPP)		Symbol
				A, B, C, D	Z	
RH 1	15	700	2.7	G 1/4		
RH 2	35	700	3	G 3/8		
RH 3	55	500	2.4	G 1/2	G 1/4	
RH 4	100	500	2.4	G 3/4		
RH 5	160	500	3	G1		
DRH 1	16	500	2.5	G 1/4		
DRH 2	30	500	2.5	G 3/8		
DRH 3	60	500	2.5	G 1/2	--	
DRH 4	90	400	2.5	G 3/4		
DRH 5	140	400	2.5	G1		

Additional versions

- Check valves with release and pre-release type RH.V
- Double check valve with shock valves suited for hydraulic motors to prevent slow pressure rises
- Manifold mounting double check valve type DRH3P
- Double check valves with leakage port to prevent unintended opening of the valve due to pressure rises, caused by leaking spool valves.

Order examples

RH 2

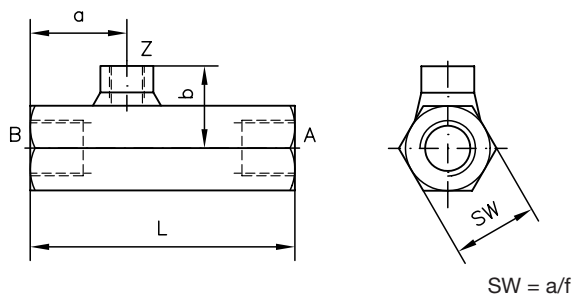
Releasable check valve type RH, size 2

DRH 1

Releasable check valve (double valve) type DRH, size 1

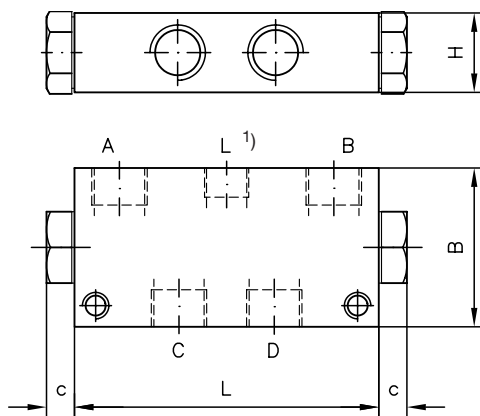
Dimensions

Type RH..



All dimensions in mm, subject to change without notice!

Type DRH..



¹⁾ only with type DRH ... L

Basic type	L	a	b	SW	m (kg)
RH 1	84	31.5	27	a/f 24	0.4
RH 2	90	32	28.5	a/f 27	0.4
RH 3	100	36.5	31	a/f 32	0.6
RH 4	126	45	35.5	a/f 41	1.3
RH 5	143	52	38	a/f 46	1.8

Basic type	L	B	H	c	m (kg)
DRH 1	70	45	20	8	0.5
DRH 2	89	60	30	10	1.2
DRH 3	115	60	30	13	1.6
DRH 4	150	70	40	15.5	2.9
DRH 5	195	80	50	17	5.5

Further information

- Releasable check valves type RH D 6105
- Releasable double check valves type DRH D 6110
- Releasable check valves type RHV D 3056
- type RHC D 7165
- type HRP D 5116
- type CRH D 7712

- See also section "Devices for special applications" (Devices for up to 700 bar)

For page and section of the devices additionally listed, see type index