

## TYPICAL TYPE - BOLLARDS



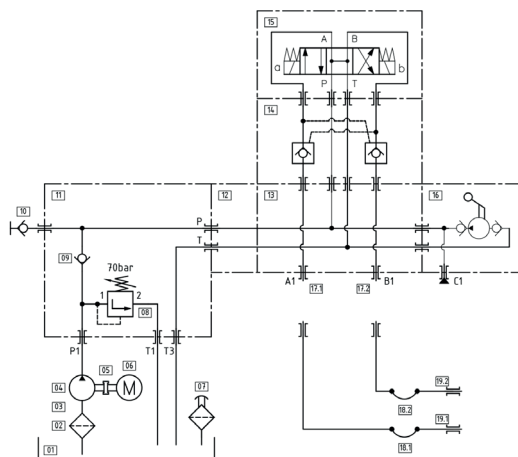
### DESCRIPTION

Made by Dexco, our hydraulic solution allows manufacturers to produce bollards more quickly, safely, and with high quality.

The solutions include conventional Hydraulic Power Units - HPU or Mini Hydraulic Power Units - MHPU, equipped with a complete drive system and a manual safety pump in case of a power failure. The linear actuators are robust and equipped with safety valves that ensure their position is maintained securely.

They can be supplied with electric motors of alternating current 110V, 220V, 380V, and up to 440V, or direct current 12VDC or 24VDC.

### HYDRAULIC CIRCUIT



### APLICACION: BOLLARDS

