

## TYPICAL TYPE - 2 POST CAR LIFT

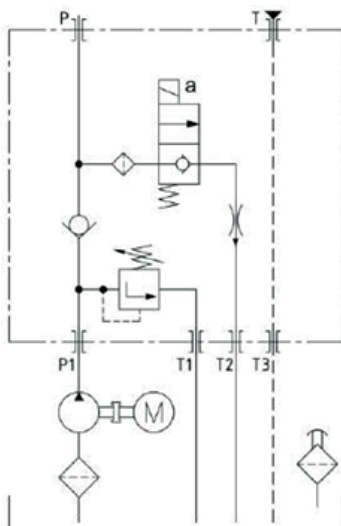


### DESCRIPTION

Designed for low and high-rise auto hoisting applications, Dexco's 2 post car lift can be mounted either horizontally or vertically.

The unit features a motor-driven push button for raising the vehicle on the lift. For lowering, a manually operated cartridge-style release valve provides fingertip control over lowering speed.

### HYDRAULIC CIRCUIT



### APPLICATION: 2 POST CAR LIFT

