

TYPICAL TYPE - STACKER

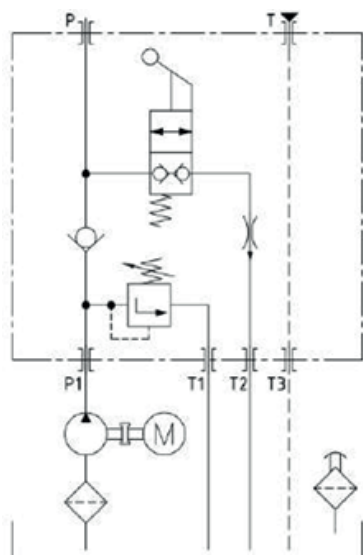


DESCRIPTION

Made by Dexco, the 12V and 24V DC power packs works, electric-power, go up / manual system, go down by gravity.

STAKER power up/gravity down, is controlled by manual lever, and lowering speed is also controlled by lever angle.

HYDRAULIC CIRCUIT



APLICACION: STACKER

