

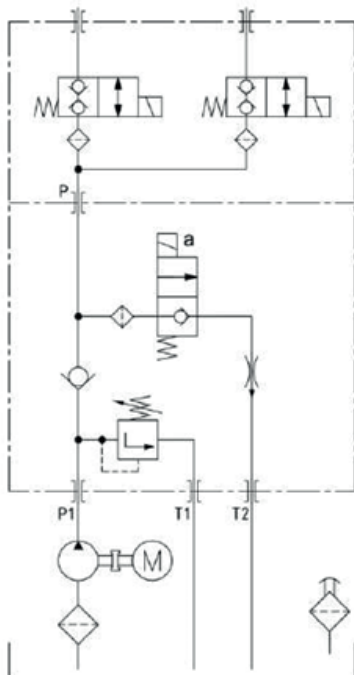
## TYPICAL TYPE - TAIL LIFT

### DESCRIPTION

Made by Dexco, the 12VDC and 24VDC power packs come in manual or solenoid-operated versions, for single acting cylinders, Double acting cylinders.

Several control types, with or without box type, is available for many DC, lift / hold / lower applications, **TAIL LIFT PLATFORM** system.

### HYDRAULIC CIRCUIT



### APPLICATION: TAIL LIFT

